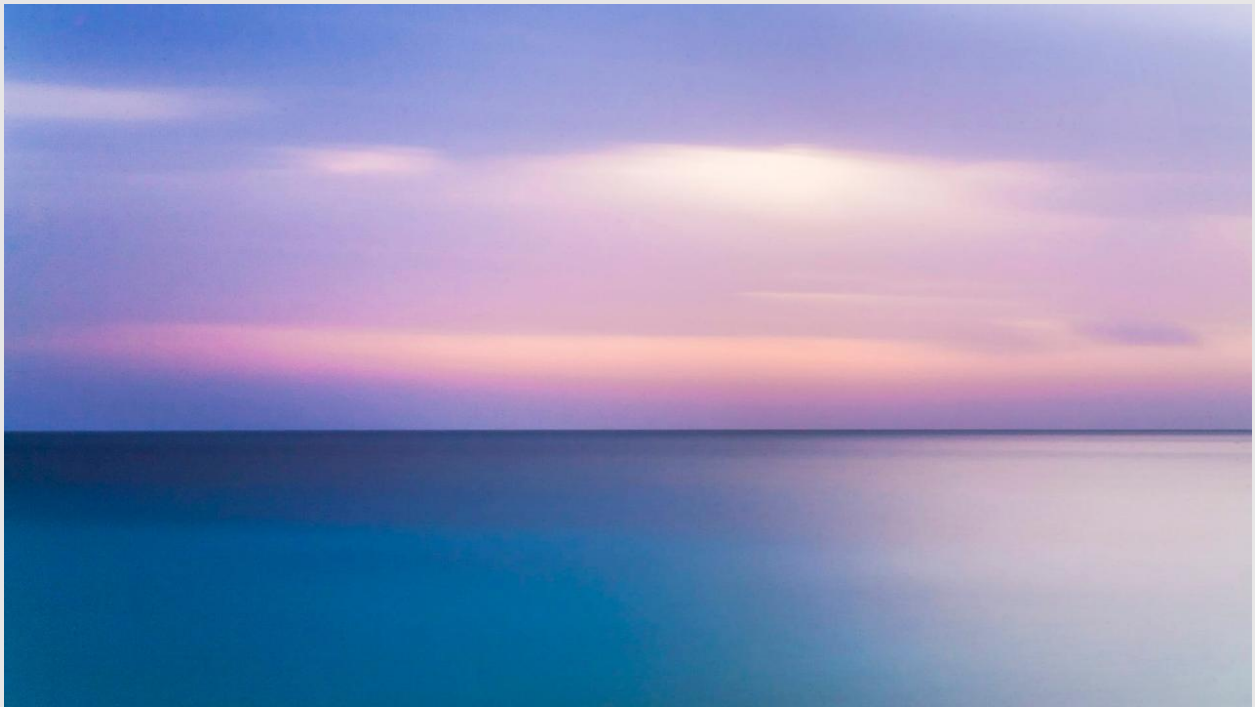


Understanding Depression

A Gentle Look at What Happens Inside the Mind and Heart

*A compassionate exploration of one of the most misunderstood experiences
of our time*



In quiet, gentle moments, something in us begins to breathe again.



May 2026

A QUIET ACKNOWLEDGMENT

You Are Welcome Here

If you have found your way here, perhaps something in you is searching — for answers, for comfort, or simply to feel a little less alone. Whatever has brought you to these words, you are welcome here. This is a space without judgment, without clinical coldness, and without the pressure to simply feel better. Instead, this is an invitation to understand — gently, honestly, and with great compassion — what depression truly is, and what it quietly does to the brain and body we live in.

Depression is not a character flaw. It is not weakness dressed in sadness. It is one of the most complex, nuanced, and deeply human experiences a person can live through — and yet, it remains widely misunderstood, even by those who carry it. To begin to understand it is not to diminish it, but to begin, perhaps, to hold it with a little less fear.



May 2026

Depression is not a character flaw. It is not weakness dressed in sadness. It is one of the most deeply human experiences a person can live through.

So let us begin, together, with no rush and no judgment — only the quiet intention to understand a little more than we did before.

UNDERSTANDING THE EXPERIENCE

What Is Depression, Really?

At its heart, depression is far more than a prolonged feeling of sadness. It is a whole-body experience — one that touches thoughts, memories, energy, appetite, sleep, and even the way we perceive time. Days can feel heavy in a way that is almost physical. Simple tasks can become mountainous. Things that once brought joy can suddenly feel distant, as though seen through clouded glass.

The World Health Organization describes depression as one of the leading causes of disability worldwide, affecting more than 280 million people across



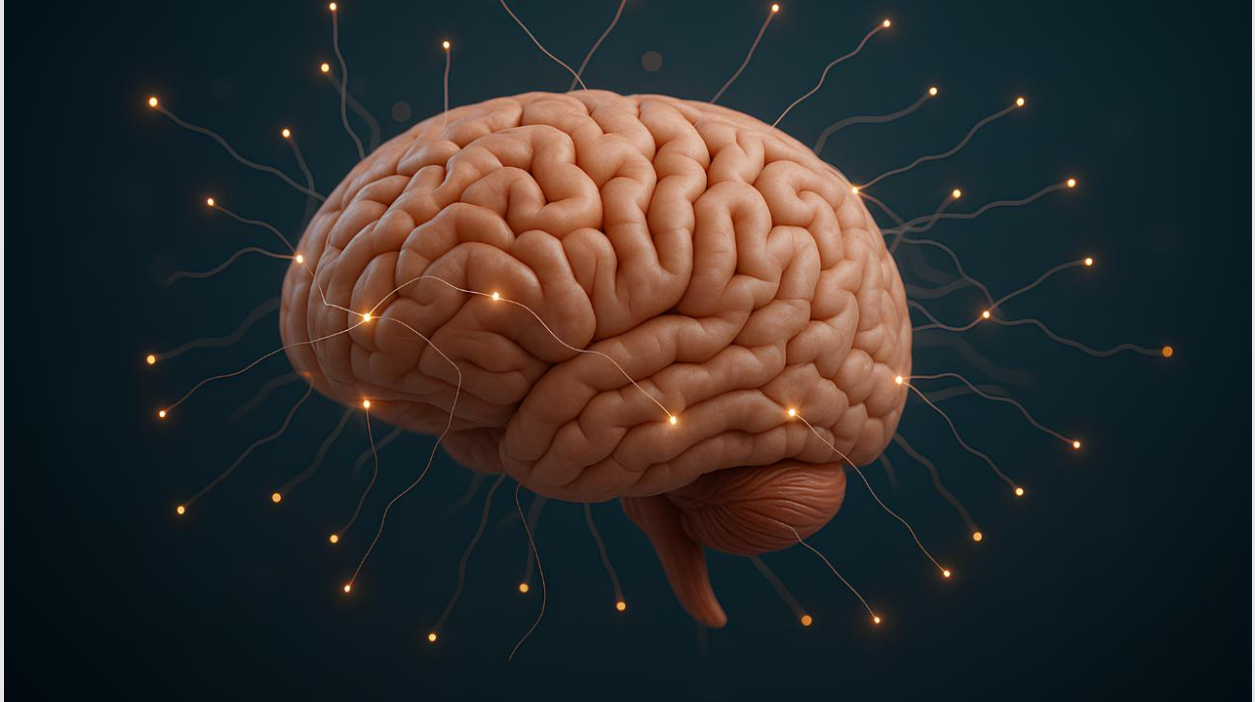
May 2026

every age group, culture, and walk of life. Yet despite its reach, the lived experience of depression is often profoundly isolating. Many who struggle with it describe feeling misunderstood – by others, and sometimes even by themselves.

There are several forms depression can take. Major Depressive Disorder brings persistent, deep lows that significantly affect daily functioning. Persistent Depressive Disorder – sometimes called dysthymia – is a longer-lasting, lower-grade form that can be easy to overlook but quietly exhausting to carry. Seasonal Affective Disorder follows the rhythms of light and season. Postpartum depression arrives in the tender, overwhelming weeks after childbirth. Each form is real. Each deserves care.

Naming these different forms is not an act of clinical distance – it is an act of recognition. It is a way of saying: we see you, in whatever particular shape your experience takes. There is no hierarchy of suffering here. There is only the honest acknowledgment that this is real, and that you are not alone in it.

A CLOSER LOOK AT THE BRAIN



What Changes Within

One of the most important things to understand about depression is that it has a measurable, biological presence in the brain. This is not a metaphor. Depression changes the structure, chemistry, and function of the brain in ways that researchers are still working to fully understand — but what they have already found is both remarkable and deeply humanizing.



The Role of Neurotransmitters

The brain communicates through a symphony of chemical messengers called neurotransmitters. In depression, this symphony can fall out of tune. Serotonin – often associated with feelings of well-being and calm – may be present in lower concentrations or function less effectively. Dopamine, which governs our sense of motivation, reward, and pleasure, can become muted, which helps explain why activities that once felt joyful may no longer register as such. Norepinephrine, which plays a role in alertness and energy, may also be affected, contributing to the exhaustion and fog that so many describe.

It is worth saying gently but clearly: these are not failures of character. They are shifts in chemistry – shifts that can be supported, treated, and, in many cases, meaningfully restored.

Changes in Brain Structure

Research using brain imaging has revealed something quietly profound: depression can actually alter the physical structure of the brain over time. The hippocampus – a small, seahorse-shaped region that plays a central role in memory formation and emotional regulation – often shows a reduction in volume in people who have experienced prolonged or repeated depressive episodes. This may be one reason why depression can make it harder to concentrate, to recall memories clearly, or to learn new things.



May 2026

The prefrontal cortex, the region responsible for decision-making, planning, and regulating emotional responses, can also be affected. When this region is less active than usual, it becomes harder to pull ourselves back from spiraling thoughts, to see situations with perspective, or to imagine that the future might look different from the present. The amygdala – our brain's alarm system, responsible for processing fear and emotional threat – often becomes hyperactive in depression. This may explain why everything can feel so heavy, so frightening, or so overwhelming, even in moments that might otherwise seem manageable.

The brain, doing its best to protect itself, sometimes becomes caught in patterns that no longer serve it. Understanding this is not an excuse – it is an explanation. And explanations, offered gently, can be the beginning of compassion.

The Stress Response and Cortisol

Depression and the body's stress response are deeply intertwined. Chronic stress – whether emotional, environmental, or relational – elevates cortisol, the body's primary stress hormone. Over time, elevated cortisol can be harmful to the brain, particularly to the hippocampus. It can also suppress the growth of



May 2026

new neurons — a process called neurogenesis — which researchers now believe plays a meaningful role in both the onset of depression and in recovery from it.

There is something tender in this connection. So many people who experience depression have also experienced prolonged stress, loss, trauma, or uncertainty. The brain, doing its best to protect itself, sometimes becomes caught in patterns that no longer serve it. Understanding this is not an excuse — it is an explanation. And explanations, offered gently, can be the beginning of compassion.

THE INNER LANDSCAPE



How Depression Feels From the Inside

No piece of writing, however carefully composed, can fully capture what depression feels like from within. But there are experiences that many people describe – quietly, and often with a certain relief at being understood.

There is the exhaustion – not tiredness that sleep reliably fixes, but a bone-deep weariness that is present even after a full night's rest. There is the anhedonia, a word that simply means the inability to feel pleasure – the strange emptiness of standing in front of something once beloved and feeling



May 2026

nothing in return. It is one of the loneliest feelings depression can produce: the disconnection not from others, but from your own joy.

There is the slowing of thought, sometimes called cognitive fog, where once-sharp minds feel sluggish, decisions feel impossible, and words that used to come easily seem to drift just out of reach. There is the ache of social withdrawal – not always born of dislike, but of an inner world that has become so heavy that reaching outward simply takes more than is available.

And there is, for many, a voice – quiet or loud – that whispers unkind things. That says this is permanent. That says this is deserved. This voice is a symptom, not a truth. It is as much a part of the illness as a fever is to an infection – uncomfortable, real, and never to be confused with who the person truly is.

If you recognise any of these experiences, please let this be the moment you hear it clearly: what you are feeling is not a reflection of your worth. It is a reflection of what your mind and body are carrying right now. And that, with time and support, can change.



May 2026

THE BODY AND MIND AS ONE

The Body Listens Too

Depression does not stay neatly inside the mind. It travels through the body with surprising completeness. Appetite may shift dramatically – some find themselves unable to eat, while others find food to be the one thing that still offers a moment of comfort. Sleep is often disrupted: some sleep far too much, finding the unconsciousness of sleep to be a relief from waking pain; others lie awake, their minds refusing to quiet.

Physical aches and pains are more common in depression than many people realise – headaches, digestive discomfort, a general heaviness in the limbs. The immune system, deeply connected to emotional states through the gut-brain axis and inflammatory pathways, can also be affected. Some researchers now believe that inflammation itself plays a role in certain forms of depression, opening new doors for understanding and treatment.



May 2026

The body and mind are not separate. They are one, always in conversation – and both deserve to be cared for with equal tenderness.

This is worth sitting with for a moment. When the body speaks – through fatigue, through pain, through restless nights – it is not being dramatic. It is telling a real story, one that deserves to be heard with the same seriousness we would offer any other medical symptom. The body and mind are not separate. They are one, always in conversation – and both deserve to be cared for with equal tenderness.

GENTLE PATHS TOWARD HEALING



What Helps

Healing from depression is rarely a single event. It is, for most people, a quiet accumulation — of small steps, supportive relationships, professional guidance, and moments of grace that appear unexpectedly. It is rarely linear, and it is rarely fast. But it is real, and it is possible, and that is worth saying clearly and without qualification.



May 2026

Therapy, particularly forms like Cognitive Behavioural Therapy and Interpersonal Therapy, has shown meaningful effectiveness in helping people untangle the thought patterns and relational dynamics that sustain depression. A skilled therapist does not fix a person – they walk alongside, offering a different perspective and a space that is genuinely safe. The therapeutic relationship itself – that quiet, consistent presence of someone who witnesses you without judgment – can be profoundly healing in its own right.

Medication, for many, provides essential support – not a cure, but a steadying. Antidepressants work by supporting neurotransmitter function, and while they are not right for everyone, for many they provide enough of a floor to begin doing the other work of healing. Finding the right medication often requires patience, and that is worth naming honestly. It can take time, and that process deserves compassion too.

Lifestyle – when approached without pressure or harshness – can also play a supporting role. Gentle movement, particularly in nature, has been shown to support mood and neurogenesis. Sleep, even imperfect sleep, matters more than many realise. Nutrition, social connection, creativity, and time



May 2026

spent in light and open air – these are not cures, but they are kindnesses the body can receive.

And then there is the simple, profound act of being witnessed. Of having someone – a friend, a family member, a therapist, a peer – sit with you in your experience and say: I see you. I am not afraid of what you are carrying. You do not have to carry it alone. This, perhaps more than any other intervention, is what many people who have moved through depression remember most: that someone stayed.

THE POWER OF SPEAKING

Breaking the Silence – Why Talking Matters

Stigma remains one of the most significant barriers to people seeking help for depression. In too many conversations, depression is still met with phrases like "just think positive," or "you have so much to be grateful for," or "everyone feels sad sometimes." These responses, however well-intentioned, can deepen the isolation that depression already creates. They place the burden of recovery



May 2026

on the person least equipped to carry it alone, and they subtly suggest that the experience is somehow optional – a choice being made poorly.

Speaking openly about depression – in families, in workplaces, in communities – slowly changes the landscape. Every time someone says, honestly and without apology, that they are struggling, they make it a little safer for the next person to do the same. This is not small work. It is some of the most important work we can do for one another. Every honest conversation is a quiet act of courage and of collective care.

If you are living with depression, please know: reaching out is not a sign of weakness. It is, perhaps, one of the most courageous things a person can do.

If you are living with depression, please know: reaching out is not a sign of weakness. It is, perhaps, one of the most courageous things a person can do. It asks you to trust – in another person, in the possibility of help, and in the part of yourself that still believes things can be different. That part of you is wise. Listen to it.



May 2026

A WORD TO CARRY WITH YOU

You Are More Than This Season

Depression can feel permanent. It rarely is. For the vast majority of people, with appropriate support, depression lifts — sometimes gradually, sometimes in ways that feel almost surprising. The brain, remarkable as it is, has an extraordinary capacity for healing, adaptation, and change. New neural pathways can be built. Neurogenesis continues. Hope, even when it cannot be felt, is rarely as absent as it seems.

If you are in the middle of your own difficult season, please be gentle with yourself. You are not broken. You are not alone. You are a whole person, carrying something heavy — and that is worthy of every kindness, every support, and every moment of rest you can offer yourself. The weight you are carrying is real. So is the possibility of setting some of it down.

And if someone you love is carrying this weight, the most powerful thing you can offer is presence. Not solutions. Not urgency. Just the quiet, steady message that you are here, that you are not going anywhere, and that they matter deeply to you. That message, offered consistently and without condition, can mean more than any words of advice ever could.



May 2026

Depression is part of the human story. But it is never the whole story. Within every person who has walked through it – and within every person still walking through it now – there is more: more capacity, more resilience, more light than the darkness currently allows them to see. That light does not disappear. It waits.

You are more than this season. And this season, like all seasons, will change.

This piece was written with the hope that it brings a measure of comfort, understanding, or validation to anyone who needs it. If you or someone you love is struggling with depression, please consider reaching out to a qualified mental health professional. You deserve support that is warm, skilled, and genuinely yours. You are not alone – and you never have to be.